

Hammerset anchor EA-N

The economical hammerset anchor with internal thread for non-structural and non-safety-critical applications.

OVERVIEW



Hammerset anchor
EA-N, zinc-plated steel

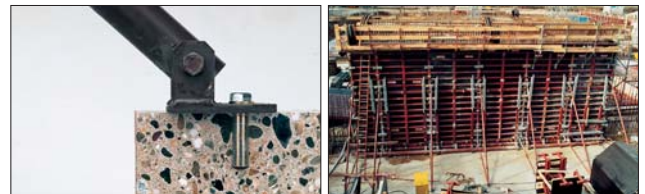
Suitable for:

- Non-cracked concrete C12/15
- Natural stone with dense structure

High performance steel anchors

DESCRIPTION

- Hammerset anchor with internal thread for pre-positioned installation.
- When the expander cone is driven in with EAW H Plus setting tool, the anchor sleeve is expanded and is pressed against the hole wall.



Advantages/benefits

- Suitable for non-cracked concrete and for anchoring light ceiling linings and suspended ceilings.
- Suitable for all screws or studs with metric threads.
- Low anchoring depth reduces drilling time and thus cost-efficient installation.
- Surface-flush anchor allows the attached item to be removed and refitted several times.

www.shirazee.co.in

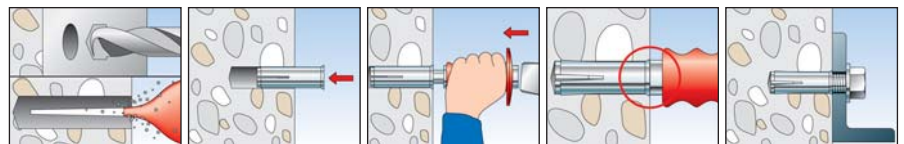
INSTALLATION

Type of installation

- Pre-positioned installation

Installation tips

- Use fischer EAW H Plus setting tool.
- Observe the minimum and maximum screw-in depths when selecting the screws.
- For the fixation of core drilling machines and diamond saws, use the special EA II M 12 D (see page 152) with stronger anchor sleeve or the special fixing device FDBB (see page 168).



STANDARDS

You will find everything that has standards on page 34 under the keyword approvals.

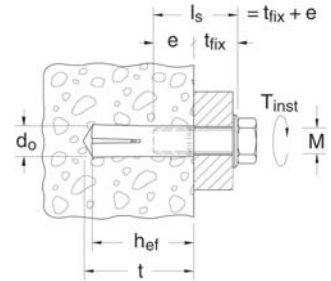
Hammerset anchor EA-N

TECHNICAL DATA



Hammerset anchor **EA-N**, zinc-plated steel. **Not suitable for core drilling machines and diamond saws.**

Type	Art.-No.	ID	drill	min. drill hole depth	effect. anchoring depth	total length	thread	min. bolt penetration	max. bolt penetration	Qty. per box
			d_0	t	h_{ef}	l	M	e_2	e_1	pcs.
			[mm]	[mm]	[mm]	[mm]		[mm]	[mm]	
EA M 6 N	90159	5	8	25	25	25	M 6	6	12	100
EA M 8 N	90160	1	10	30	30	30	M 8	8	13	100
EA M 10 N	90161	8	12	40	40	40	M 10	10	17	50
EA M 12 N	90162	5	16	50	50	50	M 12	12	22	50
EA M 16 N	90163	2	20	65	65	65	M 16	16	27	25
EA M 20 N	90164	9	25	80	80	80	M 20	20	34	25



Machine setting tool **EA II S-SDS**

Type	Art.-No.	ID	clamping system of hammer drill	fits	Qty. per box
					pcs.
EA II S-SDS 6	1) 48065	6	SDS plus	EA II M6*, EA M 6 N	1
EA II S-SDS 8	1) 48066	3	SDS plus	EA II M 8*, EA M 8 N	1
EA II S-SDS 10	1) 48070	0	SDS plus	EA II M 10*, EA M 10 N	1
EA II S-SDS 12	1) 48071	7	SDS plus	EA II M 12 D*, EA II M 12, EA M 12 N	1
EA II S-SDS-m 16	1) 48072	4	SDS max	EA II M 16*, EA M 16 N	1
EA II S-SDS-m 20	1) 48073	1	SDS max	EA II M 20*, EA M 20 N	1

1) without embossing tool

* zinc-plated and stainless steel

www.shirazee.co.in

LOADS

Anchor size		EA M 6 N	EA M 8 N	EA M 10 N	EA M 12 N	EA M 16 N	EA M 20 N
Recommended tensile load	N_{rec} [kN]	1.5	2.1	3.3	4.8	7.0	9.5
Maximum torque	T_{inst} [Nm]	4	8	15	35	60	120