

## Wash basin and urinal fixing

Complete fixing sets.

### OVERVIEW



**WD** - Wash basin and urinal fixing



**WST** - Wash basin fixings



**WST 10 x 140 FIP** -

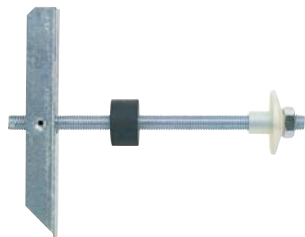
Wash basin fixing for use with Injection mortar FIS V 150 C  
(For applications in hollow bricks we recommend accessories see page 86)



**UST** - Urinal fixing



**BO** - Boiler fixing, zinc-plated



**Gravity toggle KM 10** - Wash basin and urinal fixing



**WDP** - Wash basin and urinal fixing

#### Suitable for:

- Concrete
- Natural stone
- Solid bricks
- Solid plasterboard
- Hollow blocks
- Plasterboard (only KM 10 and WDP)
- Gypsum fibreboards (only KM 10 and WDP)
- Chipboards (only KM 10 and WDP)



[www.shirazee.co.in](http://www.shirazee.co.in)

### DESCRIPTION

#### WD, WST, UST, BO

- Fixing sets consisting of UX-Plugs, stud screws, nylon nuts or flanged bushes with hexagonal nut.

#### KM and WDP

- Specially designed for fixing washstands and urinals to plumbing units and cavity walls.

#### Advantages/benefits

- Simple and quick installation.
- High-strength flanged nylon nuts and collar sleeves are resistant to ageing, chemicals and guarantees that the fitting will not damage the porcelain.
- Cover caps with a high-quality chrome finish ensure the fixture remains visually attractive for a long period of time.



#### FIXING PRINCIPLES

In detail: The general principles for installation, the correct drilling procedure and much more on page 26.

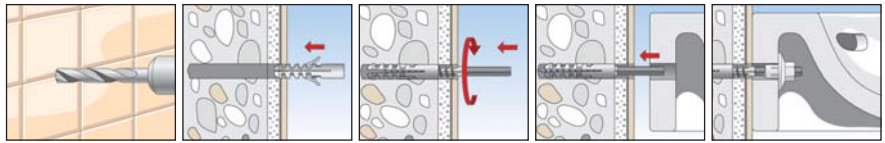
## INSTALLATION

### Type of installation

- Pre-positioned or stud-bolt installation

### Installation tips

- For perforated building materials and aerated cement, we recommend anchoring with the FIS VS 150 C injection system (refer to page 68).
- Maximum load-bearing capacity is only achieved if the screw projects through the tip of the plug by at least 1 x screw diameter and the plug expands in the load-bearing anchoring base with its whole anchoring depth.
- Tiles and plaster are not classed as load-bearing.



## TECHNICAL DATA



WD - Wash basin and urinal fixing

Type	Art.-No.	ID	Contents per plastic bag	qty. per box
			pcs.	pcs.
WD 8 x 90	<b>80659</b>	3	2 wall plugs UX 10 x 60, 2 stud screws M 8x90 zinc-plated, 2 flanged nuts BU M8, installation instructions	1
WD 8 x 110	<b>80658</b>	6	2 wall plugs UX 10 x 60, 2 stud screws M 8x110 zinc-plated, 2 flanged nuts BU M8, installation instructions	1
WD 10 x 120	<b>80655</b>	5	2 wall plugs UX 14 x 75, 2 stud screws M 10x120 zinc-plated, 2 flanged nuts BU M10, installation instructions	1
WD 10 x 140	<b>80656</b>	2	2 wall plugs UX 14 x 75, 2 stud screws M 10x140 zinc-plated, 2 flanged nuts BU M10, installation instructions	1



BO - Boiler fixing set

Type	Art.-No.	ID	Contents per plastic bag	qty. per box
			pcs.	pcs.
BO 120	<b>80654</b>	8	4 wall plugs UX 14 x 75, 4 stud screws M 10 x 120 zinc-plated, 4 flanged nuts BU M 10, installation instruction	1



WST  
Wash basin fixing



WST 10 x 140 FIS H  
Wash basin fixing

Type	Art.-No.	ID	Contents per plastic bag	qty. per box
			pcs.	pcs.
WST 10 x 140	<b>80660</b>	9	2 wall plugs UX 14 x 75, 2 stud screws M 10x140 zinc-plated, 2 flanged nuts BDH M10, installation instruction, 2 hexagon nuts M 10	1
WST 10 x 140 FIP	<b>60435</b>	9	2 plastic sleeves FIS H 16 x 85 K, 2 stud screws M 10 x 140, 2 hexagon nuts M 10, 2 flanged bushes BDH M 10, installation instructions	1
WST 12 x 150	<b>80661</b>	6	2 wall plugs UX 14 x 75, 2 stud screws M 12 x 150 zinc-plated, 2 hexagon nuts M 12 zinc-plated, 2 flanged bushes BDH M 12	1
WST 12 x 180	<b>80662</b>	3	2 wall plugs UX 14 x 75, 2 stud screws M 12 x 180 zinc-plated, 2 hexagon nuts M 12 zinc-plated, 2 flanged bushes BDH M 12	1

# Wash basin and urinal fixing WD

## TECHNICAL DATA



**UST 8 x 110**  
Urinal fixing



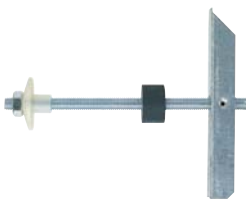
**UST 10 x 120**  
Urinal fixing

Type	Art.-No.	ID	Contents per plastic bag	qty. per box
			pcs.	pcs.
UST 8 x 110	<b>83578</b>	4	2 wall plugs S 10 R 70, 2 stud screws M 8 x 110, 2 washers B 8.4 DIN 125, 2 plastic washer 8.4 x 20 x 1.5, 2 cap nuts FA 8, 2 cover caps chrome plated	1
UST 10 x 120	<b>80668</b>	5	2 wall plugs UX 14, 2 stud screws M 10 x 120, 2 flanged nuts BU M 10, 2 cover caps AKM 10 CR	1



**WDP**  
Wash basin and urinal fixing

Type	Art.-No.	ID	thread	length	qty. per box
			M	L	pcs.
				[mm]	
WDP 10 x 170	<b>14320</b>	9	M 10	170	10



Gravity toggle **KM 10**

[www.shirazee.co.in](http://www.shirazee.co.in)

Type	Art.-No.	ID	drill	anchor length	min. cavity depth	max. panel thickness	screw	qty. per box
			$d_0$	$l$	$a$	$d_p$	$d_s \times l_s$	pcs.
			[mm]	[mm]	[mm]	[mm]	[mm]	
KM 10	<b>50326</b>	3	30	240	140	90	M 10 x 180	25

## LOADS

Recommended loads  $N_{rec}$  [kN] ( $N_{rec}$  includes safety factor 7)

Anchor type	<b>UX 14 + Stud screw M10</b>
Building material	$N_{rec}$
Concrete $\geq$ C20/25	1,0
Solid pumice brick $\geq$ V2	0,1