

One-component gun foam

OVERVIEW



PUP 750 B3



PUP 750 B2

Installation examples

- Filling window frame gaps and around window sills
- Insulating pipes
- Filling in wall penetrations, cavities, around shutter boxes - use for all interior work
- Fixing and sealing in walls and ceilings



DESCRIPTION

- One-component polyurethane foam
- The foam is extruded by using a fischer foam gun and hardens via chemical reaction with atmospheric humidity.

Advantages/benefits

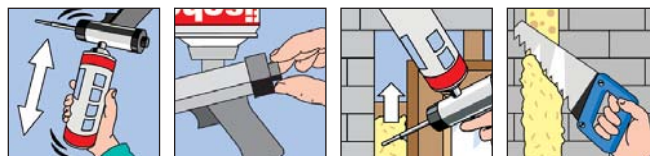
- Rapid-hardening foam reduces processing time.
- Using a foam gun allows for reduced-fatigue working and economical dosing.
- Noise-reducing properties
- Long shelf life
- Resistant to rotting
- Resistant to ageing



INSTALLATION

Installation information

- General test certificate from building authorities: P - NDS04 - 137.
- Noise-reducing properties tested by the Institut für Fenster-technik (Institute of Window Technology) e.V. Rosenheim (D). Refer to i.f.t. Test Report No. 167 323 19/71.
- Wet base surface if atmospheric humidity is low.
- Shake cartridge before use.
- Hold valve downwards when extruding foam.
- Foam yield of extruded foam: up to 45 litres.
- Resistance to temperature of hardened foam: -30° C to +80° C.



- Non-tacky after approx. 10 minutes, can be cut after approx. 25 minutes, load-bearing after approx. 3 hours, completely hardened after approx 5 - 8 hours (all details based on temperature of +20° C).
- Extrude with foam gun (refer to page 299).

TECHNICAL DATA

Type	Art.-No.	ID	contents per canister		languages	qty. per box
			[ml]	[l]		
PUP 750 B3	58501	6	750	38	GB	12
PUP 750 B3	53436	6	750	38	E, P	12
PUP 750 B2	53084	9	750	45	D	12

